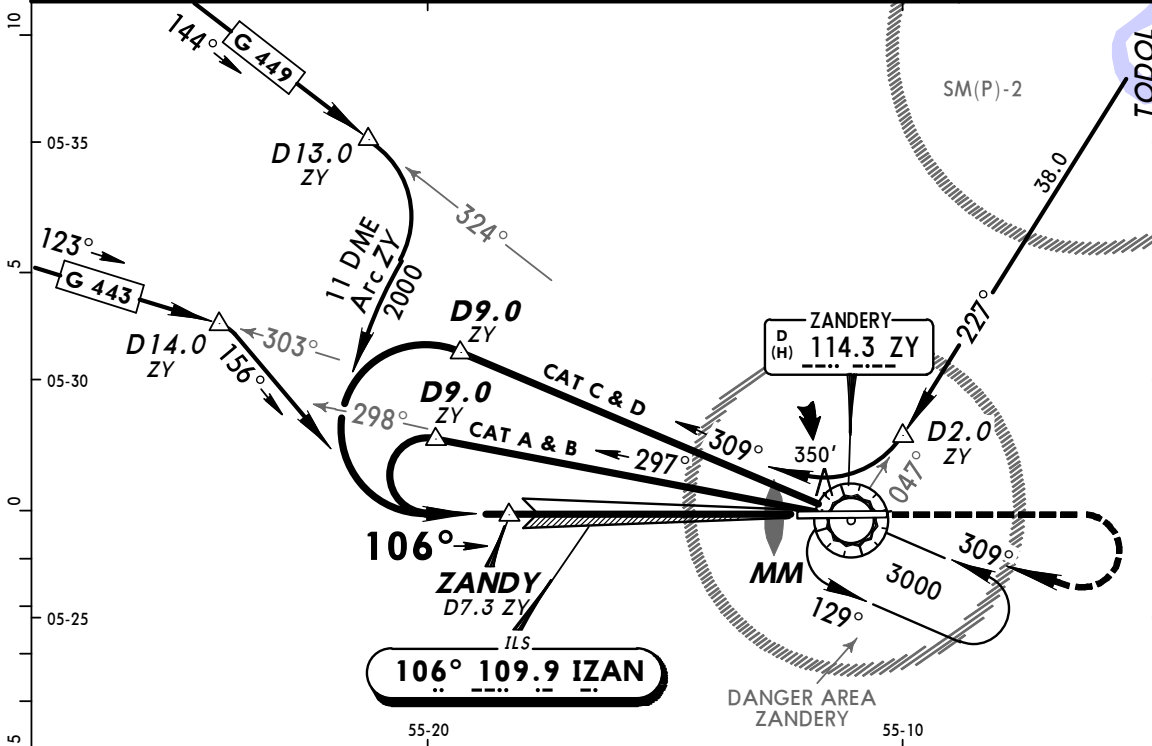
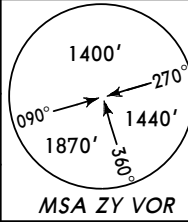
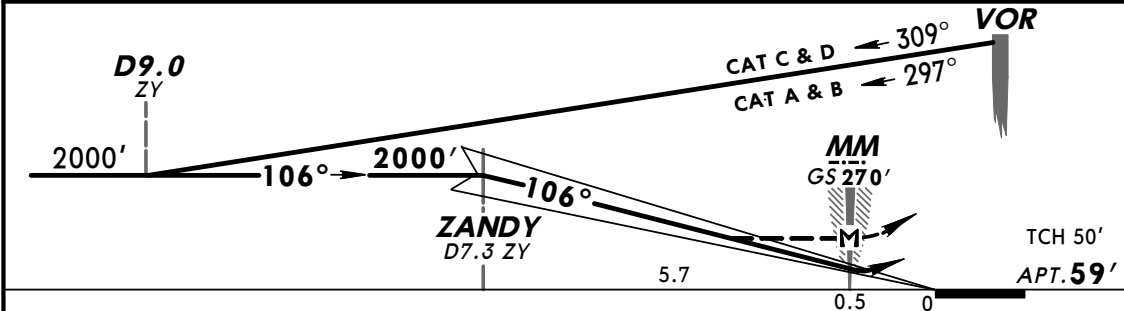


PENGEL Approach		PENGEL Tower		Ground	
129.2		118.5		121.9	
LOC IZAN 109.9	Final Apch Crs 106°	Minimum Alt ZANDY 2000' (1941')	ILS DA(H) 259' (200')	Apt Elev 59'	
MISSED APCH: Climb STRAIGHT AHEAD to 2000'. Turn RIGHT to ZY VOR and hold at 3000'.					
Alt Set: hPa		Apt Elev: 2 hPa		Trans level: FL 40	
1. DME required.				Trans alt: 3000'	



LOC	ZY DME	8.0	7.0	6.0	5.0	4.0	3.0
(GS out)	ALTITUDE	2000'	1680'	1370'	1060'	740'	420'

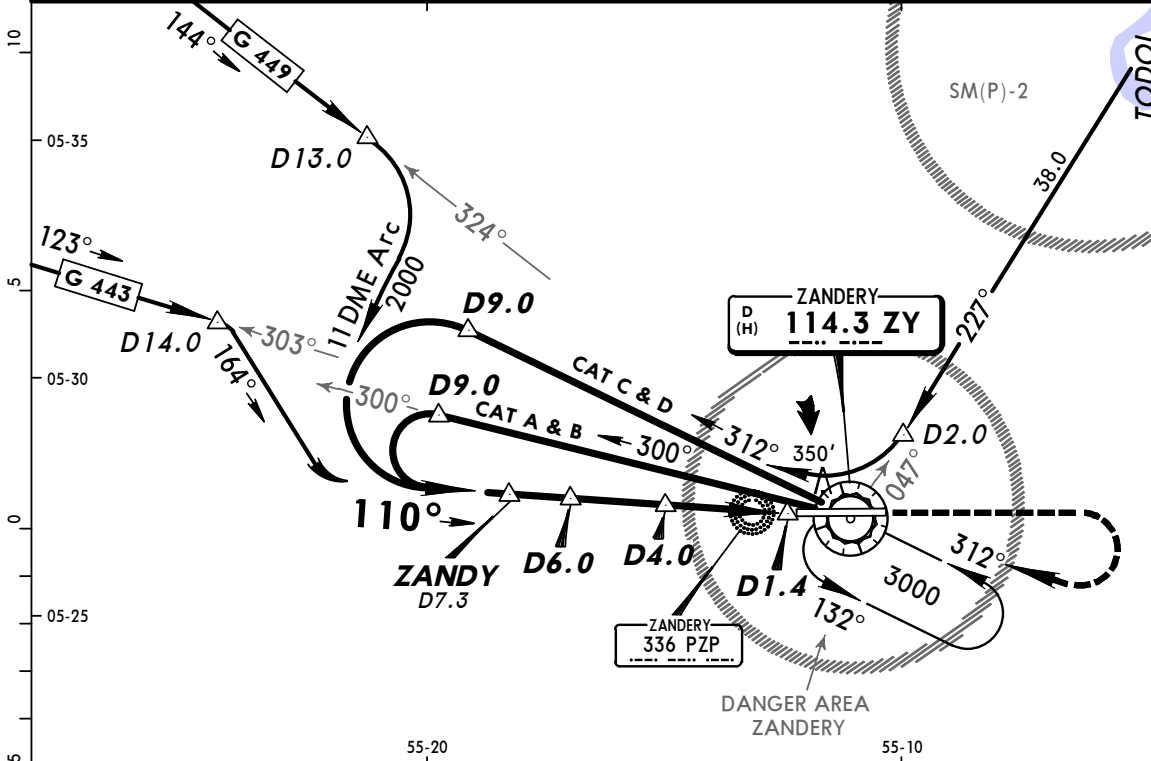


Gnd speed-Kts	70	90	100	120	140	160		PAPI	2000'	3000'	ZY
GS	3.00°	372	478	531	637	743	849	ALS	↑	RT	114.3
MAP at MM											

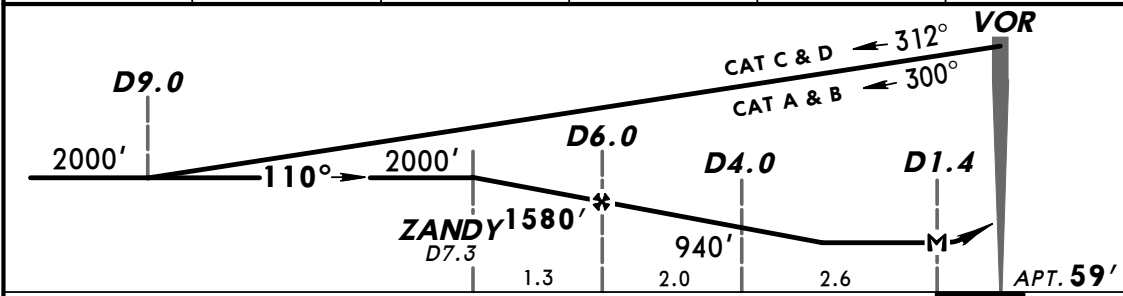
STRAIGHT-IN LANDING RWY 11		CEILING REQUIRED		CIRCLE-TO-LAND	
ILS DA(H) 259' (200')		LOC (GS out) MDA(H) 360' (301')			
FULL	ALS out	MM out	ALS out	Max Kts	MDA(H) CEIL-VIS
A				100	
B				135	
C	200' - 800m	200' - 1200m	300' - 1600m	180	1060' (1001') 1000' - 5.0 km
D			NOT AUTH	205	

PANS OPS 3

PENGEL Approach		PENGEL Tower		Ground
129.2		118.5		121.9
VOR ZY 114.3	Final Apch Crs 110°	Minimum Alt D6.0 1580' (1521')	MDA(H) 560' (501')	Apt Elev 59'
MISSED APCH: Climb STRAIGHT AHEAD to 2000'. Turn RIGHT to ZY VOR and hold at 3000'.				
Alt Set: hPa	Apt Elev: 2 hPa	Trans level: FL 40	Trans alt: 3000'	



ZY DME	7.0	6.0	5.0	4.0	3.0
ALTITUDE	1900'	1580'	1260'	940'	620'



				PAPI	2000'	3000'	ZY
				ALS	↑	RT	114.3
MAP at D1.4							

STRAIGHT-IN LANDING RWY 11 **CEILING REQUIRED** CIRCLE-TO-LAND

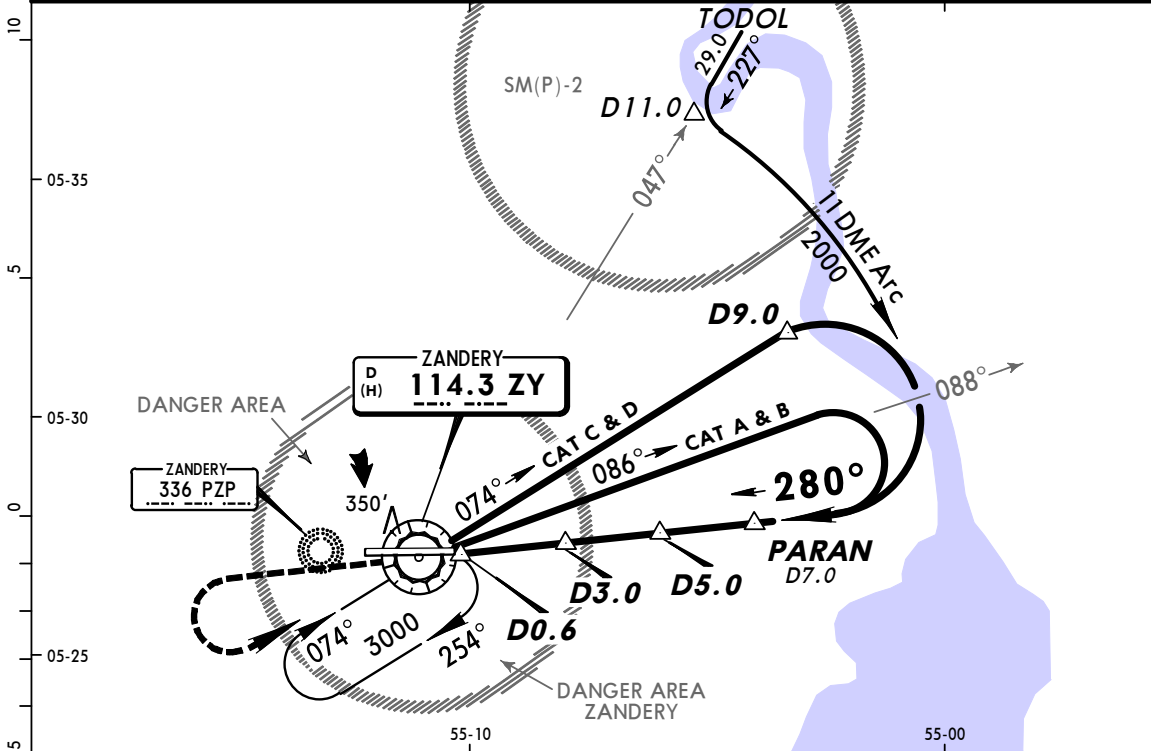
MDA(H) 560' (501')			
CEILING-VISIBILITY		Max Kts.	MDA(H) CEIL-VIS
500' - 2300m		100	1060' (1001') 1000' - 5.0 km
		135	
		180	
		205	

PANS OPS 3

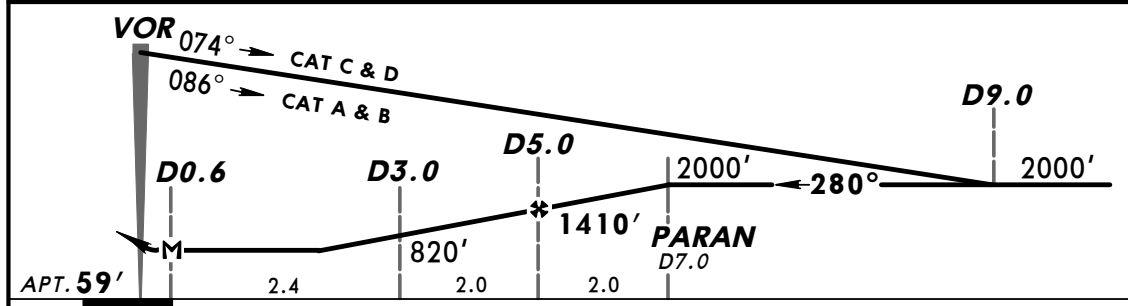
CHANGES: TANGO renamed TODOL.

© JEPPESEN, 2007, 2012. ALL RIGHTS RESERVED.

PENGEL Approach 129.2		PENGEL Tower 118.5		Ground 121.9
VOR ZY 114.3	Final Apch Crs 280°	Minimum Alt D5.0 1410' (1351')	MDA(H) 560' (501')	Apt Elev 59'
MISSED APCH: Climb STRAIGHT AHEAD to 2000'. Turn LEFT to ZY VOR and hold at 3000'.				
Alt Set: hPa	Apt Elev: 2 hPa	Trans level: FL 40	Trans alt: 3000'	



ZY DME	4.0	6.0
ALTITUDE	1110'	1700'



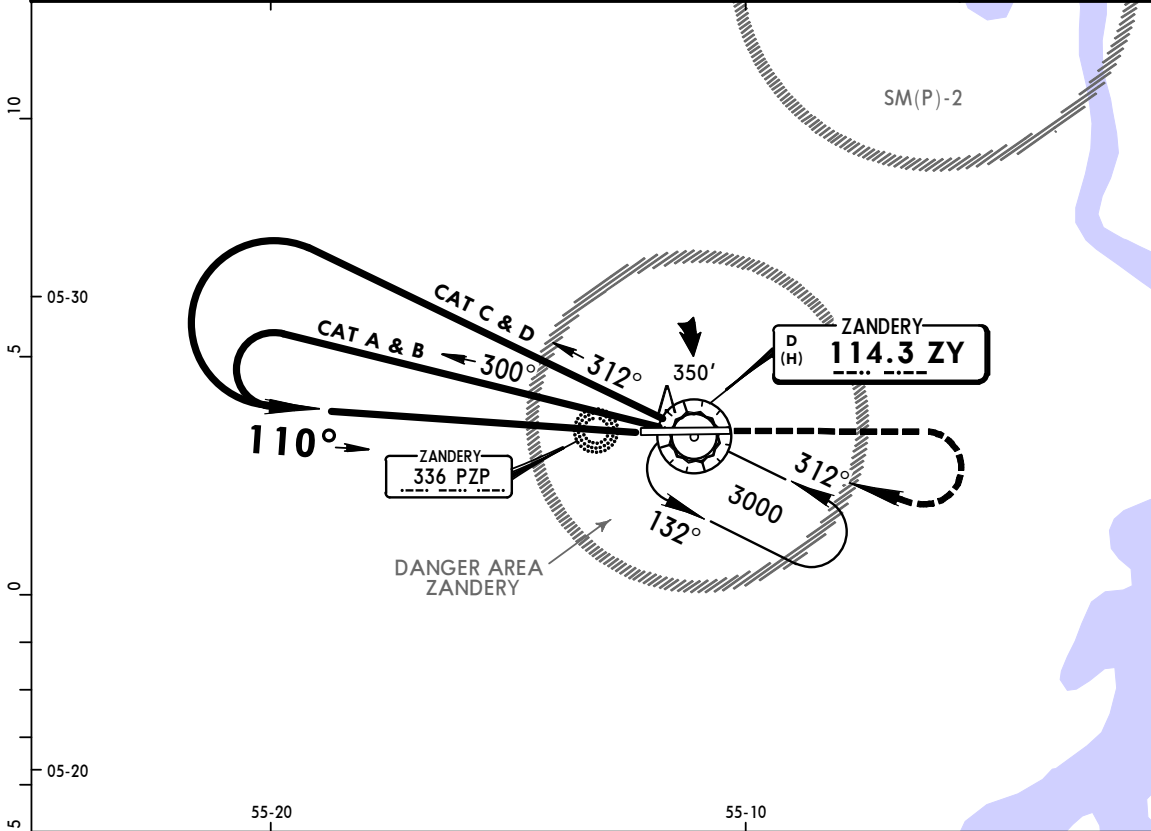
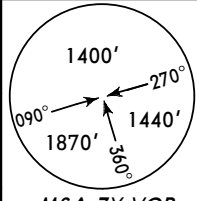
MAP at D0.6			PAPI	2000' ↑	3000' ←	ZY 114.3
-------------	--	--	------	---------	---------	----------

STRAIGHT-IN LANDING RWY 29 **CEILING REQUIRED** CIRCLE-TO-LAND

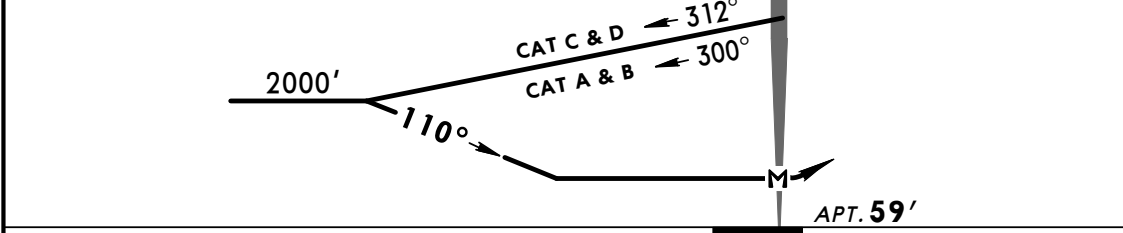
MDA(H) 560' (501')		Max Kts	MDA(H)	CEIL - VIS
CEILING-VISIBILITY		100		
500' - 2400m		135	1060' (1001')	1000' - 5.0 km
		180		
		205		

PANS OPS 3

BRIEFING STRIP™	PENDEL Approach 129.2		PENDEL Tower 118.5		Ground 121.9
	VOR ZY 114.3	Final Apch Crs 110°	No FAF	MDA(H) 560' (501')	Apt Elev 59'
	MISSED APCH: Climb STRAIGHT AHEAD to 2000'. Turn RIGHT to ZY VOR and hold at 3000'.				
Alt Set: hPa		Apt Elev: 2 hPa	Trans level: FL 40	Trans alt: 3000'	MSA ZY VOR



Gnd Speed-Kts	110	130	150	170	190	210
Timing from VOR to Turn	4:55	4:09	3:36	3:11	2:51	2:34

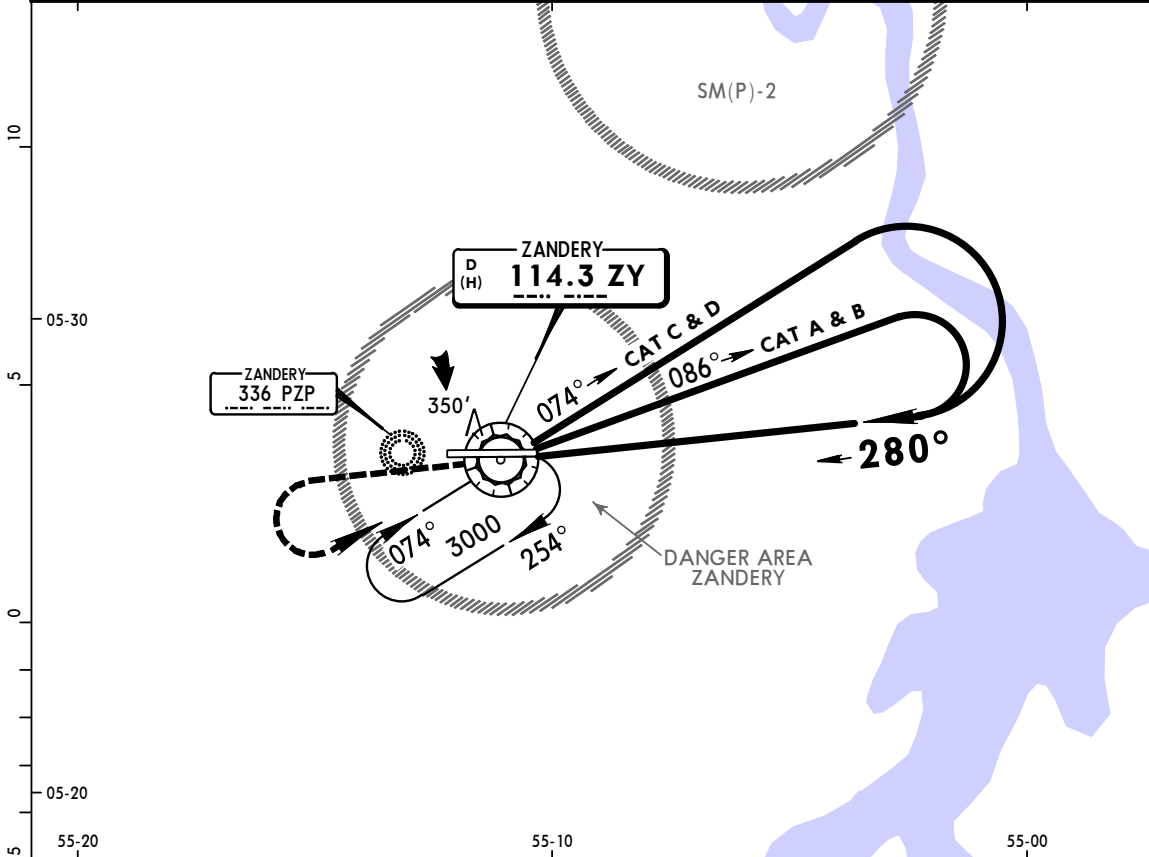
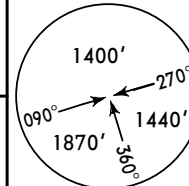


				PAPI ALS	2000'	3000'	ZY 114.3
MAP at VOR					↑	RT	

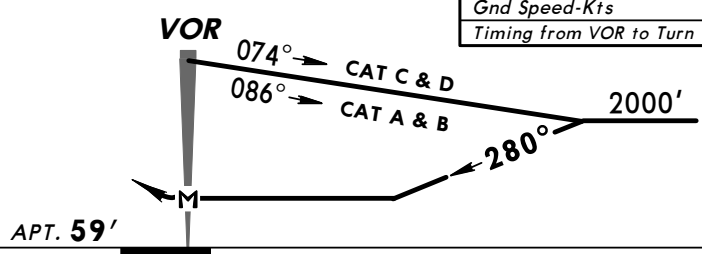
STRAIGHT-IN LANDING RWY 11		CEILING REQUIRED		CIRCLE-TO-LAND	
MDA(H) 560' (501')		ALS out		Max Kts	MDA(H) _____ CEIL- VIS _____
A	CEILING-VISIBILITY			100	
B				135	
C	500' - 2300m			180	1060' (1001') 1000' - 5.0 km
D				205	

PANS OPS 3

PENGEL Approach 129.2		PENGEL Tower 118.5		Ground 121.9	
VOR ZY 114.3	Final Apch Crs 280°	No FAF	MDA(H) 560' (501')	Apt Elev 59'	
MISSED APCH: Climb STRAIGHT AHEAD to 2000'. Turn LEFT to ZY VOR and hold at 3000'.					
Alt Set: hPa		Apt Elev: 2 hPa		Trans level: FL 40	
		Trans alt: 3000'		MSA ZY VOR	



Gnd Speed-Kts	110	130	150	170	190	210
Timing from VOR to Turn	4:55	4:09	3:36	3:11	2:51	2:34



				PAPI	2000'	3000'	ZY
					↑	←	114.3
MAP at VOR							

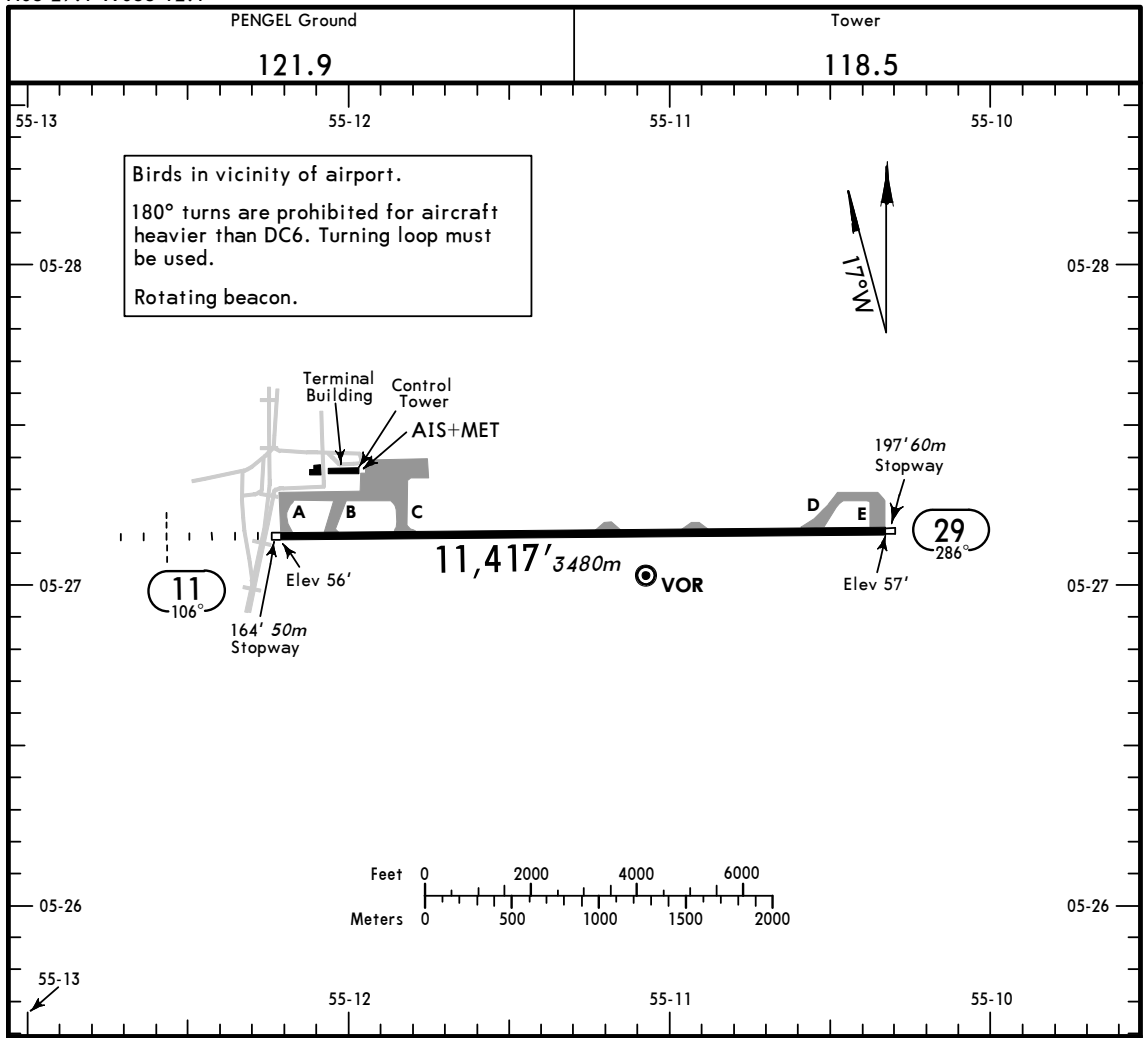
STRAIGHT-IN LANDING RWY 29 **CEILING REQUIRED** CIRCLE-TO-LAND

MDA(H) 560' (501')			
CEILING-VISIBILITY		Max Kts	MDA(H) _____ CEIL-VIS _____
A		100	
B		135	
C	500' - 2400m	180	1060' (1001') 1000' - 5.0 km
D		205	

PANS OPS 3

CHANGES: Approach frequency.

© JEPPESEN, 2007, 2012. ALL RIGHTS RESERVED.



ADDITIONAL RUNWAY INFORMATION

RWY				USABLE LENGTHS		WIDTH	
	RL	ALS	PAPI (angle 3.0°)	Threshold	Glide Slope		TAKE-OFF
11	RL	ALS	PAPI (angle 3.0°)				148'
29	RL	PAPI (angle 3.0°)					45m

TAKE-OFF	
	All Rwys
1 & 2 Eng	200' - 800m
3 & 4 Eng	